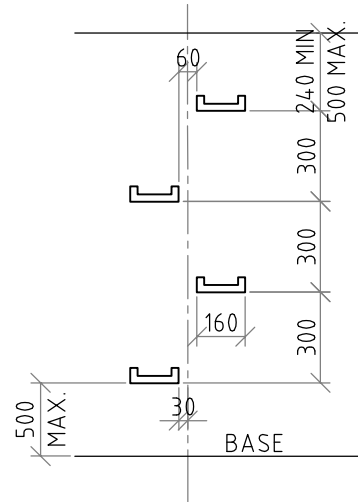


SPACING

SCALE 1:25

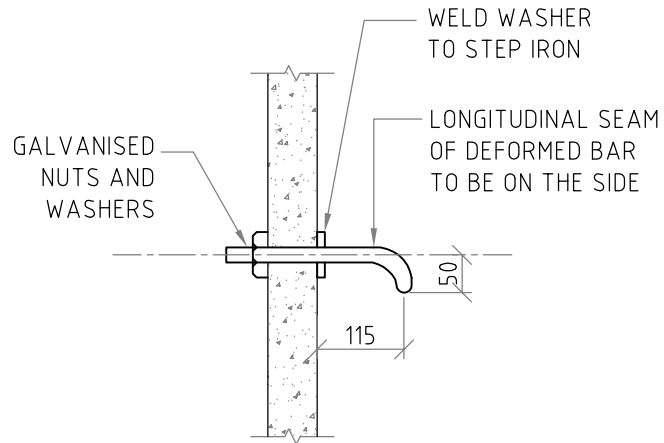


SPACING

SCALE 1:25

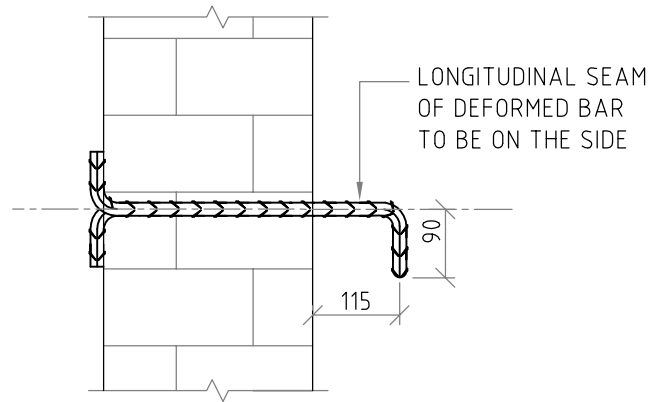
NOTES:

1. ALL DRAINAGE STRUCTURES DEEPER THAN 1200mm SHALL BE FITTED WITH STEP IRONS
2. STEP IRONS TO CONFORM TO AS1657
3. STEP IRONS TO BE LOCATED ON THE SIDE WITH LEAST INTERFERENCE FROM PIPES IN ALL JUNCTION PITS, GULLY'S, SIDE ENTRY AND/OR COMBINATION PITS
4. LINERS TO BE MADE GOOD EXTERNALLY USING CEMENT MORTAR FOLLOWING STEP IRON INSTALLATION
5. STEP IRONS TO BE 24 ϕ HOT DIPPED GALVANIZED DEFORMED BARS OR ALTERNATIVE FOR LINERS WITH PRE-CAST HOLES USE PARTIALLY ENCAPSULATED KNOCK-IN STEP IRONS THAT CONFORM TO AS1657 OR ALTERNATIVE STEP IRONS APPROVED BY THE CITY OF GOSNELLS



SIDE ENTRY PITS AND PRE-CAST STEP IRON

SCALE 1:10



SIDE ENTRY PITS AND BRICK STEP IRON

SCALE 1:10

- GENERAL NOTES**
1. THIS DRAWINGS ALWAYS REMAINS THE PROPERTY OF THE CITY OF GOSNELLS AND MUST NOT BE RETAINED OR REPRODUCED WITHOUT PERMISSION
 2. IN THE ABSENCE OF THE APPROVED SIGNATURE (ie MANAGER TECHNICAL SERVICES) THIS DRAWING SHALL BE TREATED AS PRELIMINARY
 3. ALL DIMENSIONS ARE IN MILLIMETRES UNLESS NOTED OTHERWISE

CITY OF GOSNELLS

2120 Albany Highway Gosnells 6110
PO Box 662, GOSNELLS 6990
WESTERN AUSTRALIA

Telephone 08 9397 3000
Facsimile 08 9397 3333
Online www.gosnells.wa.gov.au

STANDARD DRAWING		
STEP IRONS		
DESIGN MB	DRAWN GL	DRAWING A4
SCALE AS SHOWN	CHECKED MB	DATE 12/09/12

STANDARD DRAWING NUMBER	ES-19-12
MANAGER TECHNICAL SERVICES	M.BOTTE 4/2/15
	M. BOTTE

AMENDMENTS	REVISION	DATE	DESCRIPTION	BY	CHECKED	APPROVED
1	4/2/2015	LAYERS & DWG NO'S UPDATED	SA	MB	MB	